

# YouKnowAnot

Singapore's Leading Monthly Public Survey



## COMMUNITY SATISFACTION

Those who say they are satisfied with the way things are going in Singapore

Jun | 74  
May | 74

Community Satisfaction remained the same



## PERSONAL FINANCES

Those who rate their personal finances as Excellent/Good

Jun | 67  
May | 66

Personal Finances up one point

## NATIONAL ECONOMY

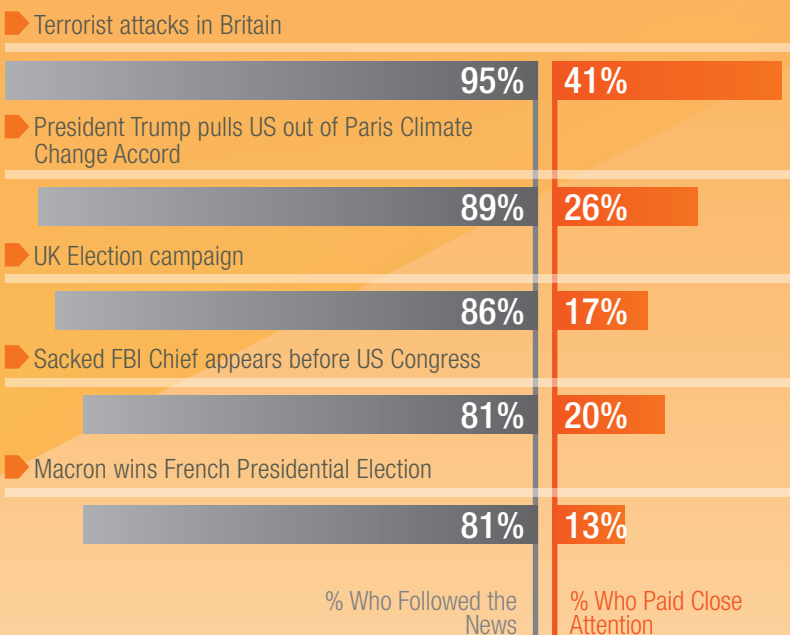
Those who rate current economic conditions in Singapore as Excellent/Good

Jun | 67  
May | 68

National Economy down one point

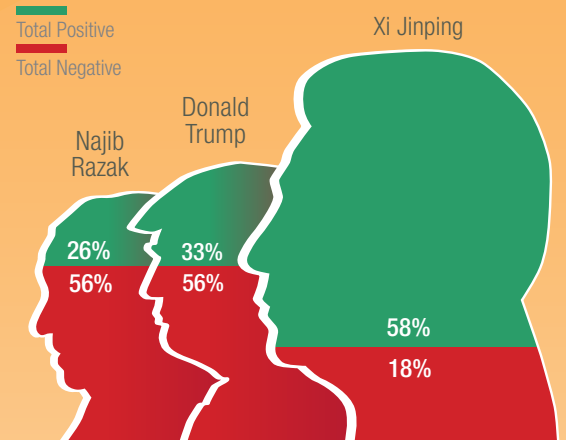


## International News Stories of the Month



Note: Top local news stories will resume in the July edition of YKA

## Foreign Leaders: How Do Singaporeans Rate Them?



Singaporeans view Chinese President Xi Jinping most favourably, with nearly 3 in 5 Singaporeans having a positive impression. The United States' Donald Trump and Malaysia's Najib Razak – leader of our nearest neighbour – did not fare as well, with more than half (56%) of Singaporeans having negative opinions of them.

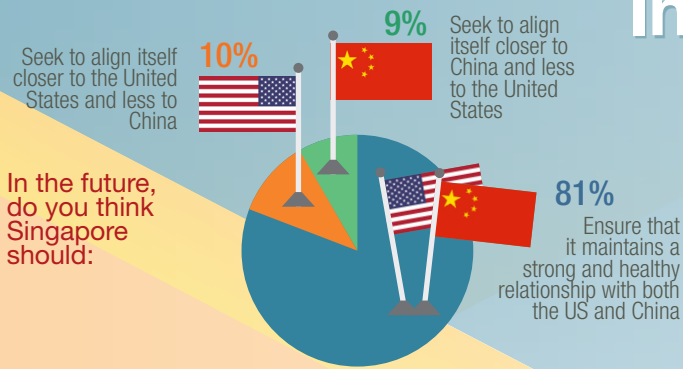
## International Relations: The U.S. & China

Singaporeans favour equal engagement with China and the United States

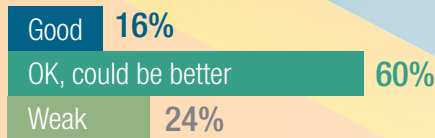
PM Lee recently spoke about expanding and deepening the wide-ranging partnerships Singapore has with both China and the United States at an interview following the G-20 Summit in Munich.

Singaporeans overwhelmingly believe we should continue to befriend both of the world's superpowers and not favour one over the other.

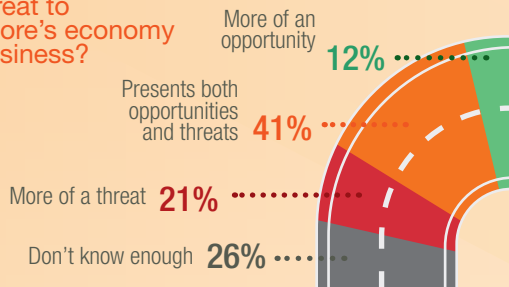
Contrary to media speculation about rifts in the relationship between China and Singapore, most Singaporeans feel that the current Sino-Singapore relationship is fine, although could be better. And one in four (24%) think that the current relationship is weak.



What do you think about the current relationship between Singapore and China, given that some believe the relationship between the two countries is not as strong as it has been in the past?



Do you think OBOR presents more of an opportunity or a threat to Singapore's economy and business?



## The One Belt, One Road Initiative

However, the revelation that PM Lee was not invited to the inaugural One Belt, One Road (OBOR) Forum sparked some commentators questioning if China is leaving Singapore out in the cold.

The Chinese-led initiative which aims to rebuild the ancient Silk Road is seen as a strong signal of intent by China to create an economic renaissance across the Eastern hemisphere.

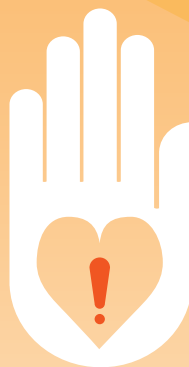
Singaporeans are still uncertain about OBOR. One in five think it presents a threat to Singapore while two in five see both upside and downside. Only 12% of Singaporeans characterise OBOR as a clear opportunity.

## Does Singapore Have a Charity Crisis?

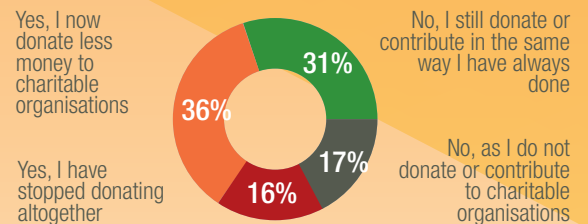
In light of recent scandals, Singaporeans say they are less willing to donate to charity.

More than half of Singapore surveyed indicated that the recent scandals surrounding charities and institutions of a public character (IPCs) have impacted their willingness to contribute, with 16% saying they have stopped donating altogether. Crucially, our data shows that higher income earners are more likely to have cut back or cease making charitable donations.

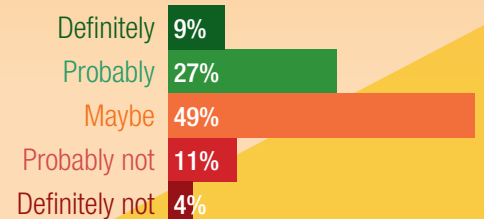
The recent decision to impose a new code of governance on charities from 2018 will also need to be reinforced. Only 36% of Singaporeans say that tougher governance will make them more likely to make donations while 49% say "maybe".



Have various public scandals surrounding charities and institutions of a public character in recent years had any impact on your willingness to donate or contribute to charities in recent times?



There have been calls recently for Singapore's charitable organisations to strengthen their governance. Would knowing that charitable organisations had to comply with tougher governance rules make you more likely to donate to charities?



## Government Satisfaction Index

Monthly  
Index

80 GSI

Monthly  
Trend

no change

The overall GSI for June remained at 80 points with no change month on month. The biggest drop was in public transport (-4), following the most recent disruptions in train services caused by ongoing signalling problems.

Rank	Issue	Satisfaction with Government	Change since last month	Change over last 12 months
1	Defence/ national security	96	0	2
2	Crime levels	95	-1	2
3	The environment	94	1	4
4	Racial relations/ integration	93	-1	4
5	Education system	90	0	6
6	Care for the Elderly	88	2	2
7	Moral standards	87	0	0
8	Health insurance/protection	86	2	3
9	Management of the economy	85	1	1
10	Taxes	82	0	7
11	Government accountability	81	-1	1
12	Public transport	80	-4	0
13	CPF/pensions	79	0	9
14	Civil rights/ liberties/ free speech	76	-1	2
15	Jobs and unemployment	75	0	2
16	Level of salaries and wages	74	-1	11
17	Population management	68	-2	9
18	Gap between rich and poor	66	-1	5
19	Housing affordability	65	-2	9
20	Cost of living	58	0	1
21	Motor vehicle prices/ COE	57	0	9
<b>Overall Government Satisfaction Index</b>		<b>80</b>	<b>0</b>	<b>+4</b>

### About the Results

Each month Blackbox conducts interviews with a representative sample of 1,000 Singaporeans.

We use a geographically stratified online sample. Our methodology also applies quota controls to ensure representative demographic coverage of the population. If you would like to purchase customised questions for your organisation or want to dig into our historical general community data/demographic information, please contact [yuling@blackbox.com.sg](mailto:yuling@blackbox.com.sg) for assistance.

## Who We Are

Blackbox Research is an award-winning Singapore based agency specialising in communications insights. We provide advanced research, analytics and digital intelligence services for both public sector and commercial clients. Our team has expertise covering market research, strategic communications and messaging, advertising and public policy.

## You Know Anot

YouKnowAnot is our monthly community survey platform that has been running since 2013. We interview a representative sample of 1,000 Singaporeans every month. We now use a geographically stratified online sample. Our methodology also applies quota controls to ensure representative demographic coverage of the population. If you would like to purchase customised questions for your organisation or want to dig into our historical general community data/demographic information, please contact [yuling@blackbox.com.sg](mailto:yuling@blackbox.com.sg) for assistance.

## Get In Touch

Blackbox Research Pte Ltd  
The Herencia  
46 Kim Yam Road  
#01-08  
Singapore 239351

**t** (65) 6323 1351  
**f** (65) 6323 1327  
**w** [www.blackbox.com.sg](http://www.blackbox.com.sg)